

# Release Notes

## Overview

<b>Date</b>	November 2024
<b>Version</b>	2024.11.3
<b>Previous</b>	2023.10.2
<b>Summary</b>	We have the pleasure to present you a better version of this application with many new features, improvements and... bug fixes.

The screenshot displays the Quick Suite Trading application interface. The main window is divided into several sections:

- Market Overview Table:** A table listing various instruments across different categories:
 

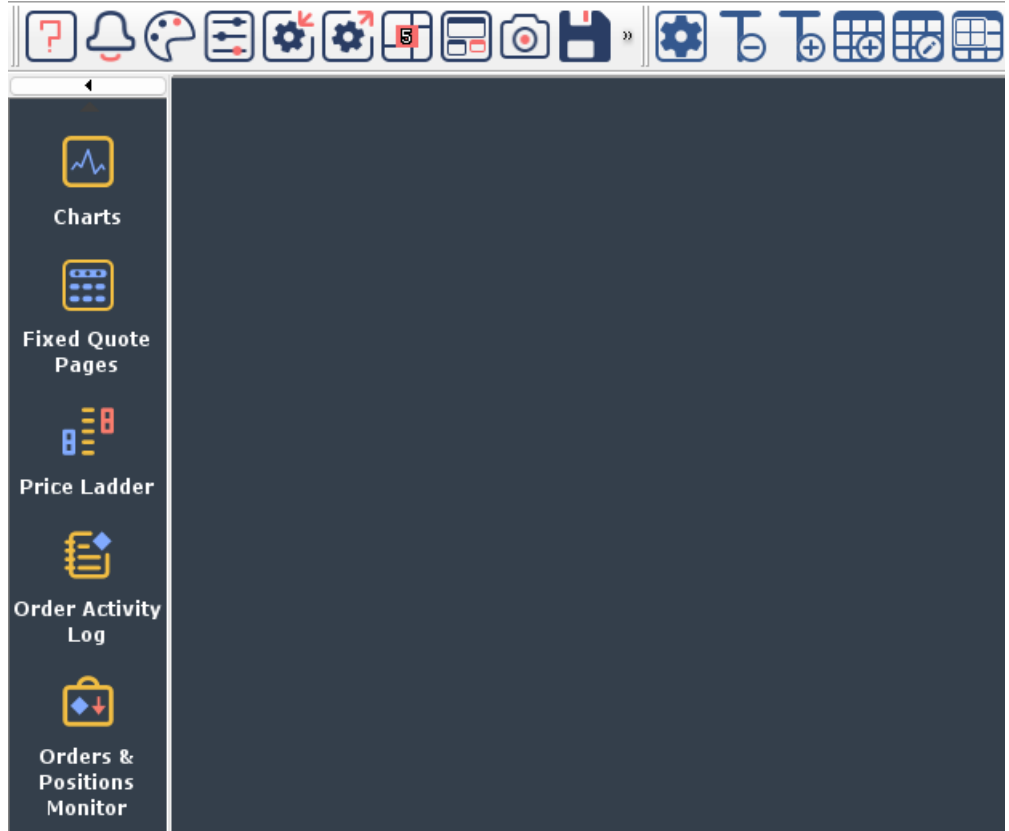
Instrument	Description	Last	Bid
ZCZ24	Corn December 2024	417 6/8	417 4/8
ZSK24	Soybeans November 2024	992 6/8	993
ZLZ24	Soybean Oil December 2024	46.31	46.30
ZMZ24	Soybean Meal December 2024	299.8	299.7
ZWZ24	Wheat December 2024	574	573 6/8
MWEZ24	Hard Red Spring Wheat December 2024	602 6/8	603
KEZ24	Kansas City Wheat December 2024	571	570 6/8
ZOZ24	Oats December 2024	400	399 6/8
ZRX24	Rough Rice November 2024	14.825	14.255
DCX24	Class III Milk November 2024	20.23	20.22
CSCX24	Cash Settled Cheese November 2024	1.9580	1.9520
LBS1-	Lumber (Legacy)		
LEZ24	Live Cattle December 2024	185.925	185.175
HEZ24	Lean Hogs December 2024	84.075	84.000
GFX24	Feeder Cattle November 2024	246.875	246.000
- Instrument Details:** A detailed view for 'Australian Dollar December 2024' (6A224), showing:
  - Exchange: CME
  - Instrument value: \$65,930.00
  - Minimum tick: 0.00005
  - Trading time: 5:00:00 PM - 4:00:00 PM CDT
  - Settlement time: 1:50:30 PM - 2:00:00 PM CDT
  - Initial margin: \$1,760.00
  - Maintenance margin: \$1,600.00
  - Expiration date: 12/16/2024
- Price Chart:** A daily candlestick chart for 6A224 from June to November, showing price fluctuations and technical indicators like moving averages.
- Order Book:** A table showing the current order book for the instrument, with bid and ask prices and sizes.

## What's New!

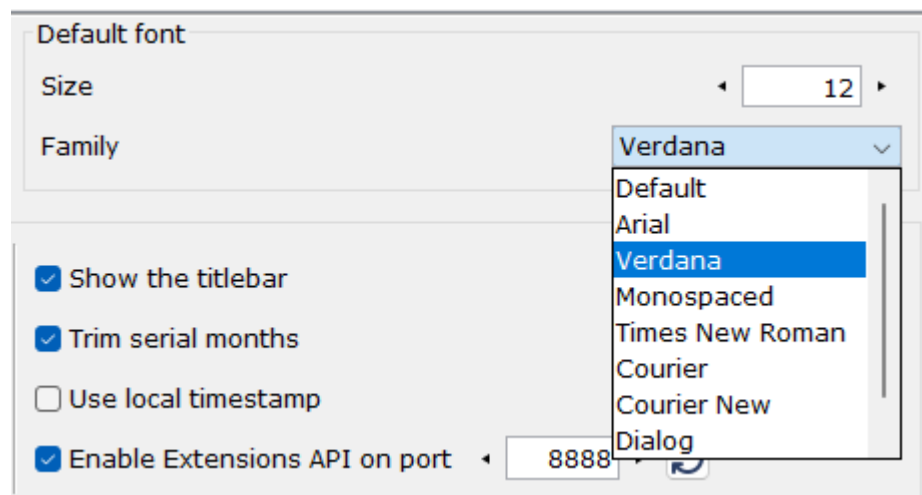
**001 What's New** The release notes can be found under **Help->About**. Just click on the version number.

<b>Version:</b>	2024.11.3
<b>Date:</b>	11/13/2024
<b>Java:</b>	1.8.0_392 64-bit

**002 Look** A new set of icons – “Version 2024” – that makes this application look more professional and offers a cross-platform consistency.

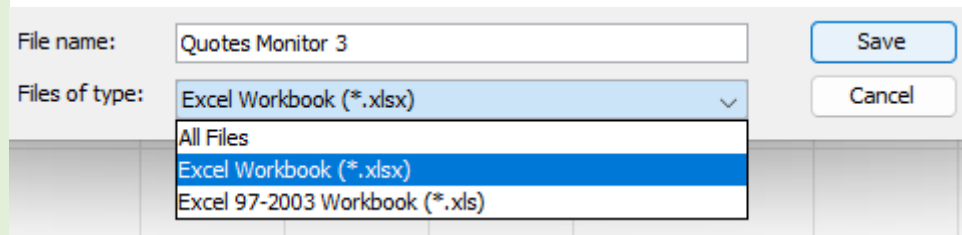


**003 Font** Change the font family from the Properties dialog.



004 Excel

Support for exporting in ".xlsx" format.



005 Excel

Use Excel to stream data provided by a 3rd party RTD server.

QST Quotes Monitor 6

Instrument	Bid	Ask
<b>Streaming via Excel</b>		
MPO H25-BMD.XSG	4469.00	4650.00
MPO U25-BMD.XSG	4040.00	4250.00
MPO Z24-BMD.XSG	4639.00	4774.00

006 Instruments

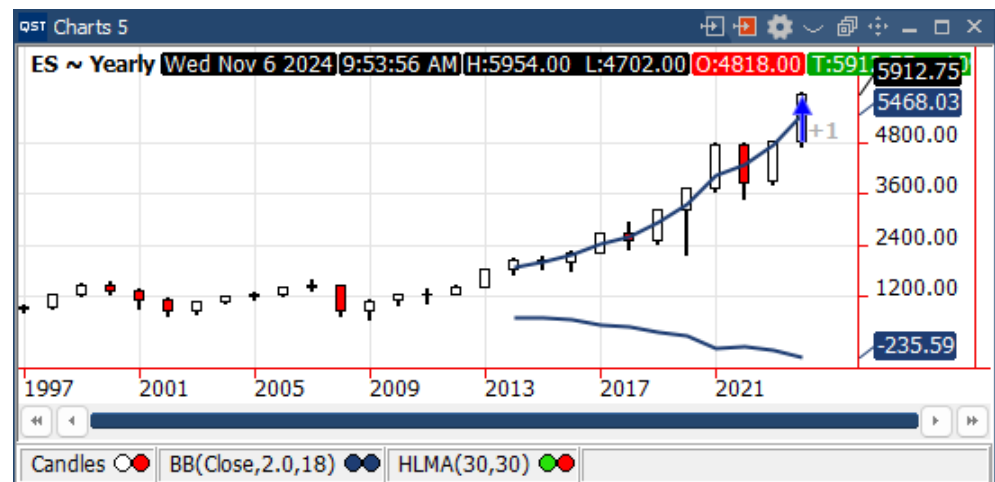
Resolve the "99" short year to "2099" for the instruments belonging to "JFX" and "APEX" exchanges

QST Quotes Monitor 2

Instrument	Instrument Description	Last
<b>APEX</b>		
PAGPZ99	APEX Silver Perpetual December 2099	S 833.8 B
PAUPZ99	APEX Gold Perpetual December 2099	S 65.48 B

007 Charts

Synthesize the "Yearly" resolution



**008 Forward Curves**

Tabular data and export to Excel

Date	ZC ~ 07/31/2024	ZC ~ 09/30/2024	ZC ~ 10/24/2024	ZC ~ 10/31/2024
Sep-2024	382 6/8			
Dec-2024	399 6/8	424 6/8	416 4/8	410 2/8
Mar-2025	415 6/8	441 2/8	429 2/8	424 6/8
May-2025	427	450 6/8	436 6/8	433 2/8
Jul-2025	434 6/8	455 6/8	440 6/8	438
Sep-2025	438 2/8	449 4/8	435	435 2/8
Dec-2025	445 2/8	454	441 6/8	440
Mar-2026	456 4/8	464 4/8	452 4/8	452
May-2026	463	470 2/8	458 4/8	458
Jul-2026	467	474	462	461 6/8
Sep-2026	449 6/8	455 2/8	449 6/8	448
Dec-2026	449	456 6/8	449 6/8	449
Jul-2027	467 4/8	473 4/8	466 4/8	465 2/8
Dec-2027	444	450 4/8	447 6/8	446

**009 Equities Monitor**

A frame that displays the prices for all the equities from a selected exchange, arranged by category in tabs.

Instrument	Instrument Description	Last	Net Change
ENJ	Entergy New Orleans LLC First Mortgage Bonds 5.0% Series due December 1 2052 (Utilities)	23.14	-0.25
EVM	Eaton Vance California Municipal Bond Fund Common Shares of Beneficial Interest \$.01 par value (Finance)	9.16	-0.10
ELC	Entergy Louisiana Inc. Collateral Trust Mortgage Bonds 4.875 % Series due September 1 2066 (Utilities)	22.34	-0.22
EIM	Eaton Vance Municipal Bond Fund Common Shares of Beneficial Interest \$.01 par value (Finance)	10.38	-0.07
EMP	Entergy Mississippi LLC First Mortgage Bonds 4.90% Series Due October 1 2066 (Utilities)	22.46	-0.32
ENO	Entergy New Orleans LLC First Mortgage Bonds 5.50% Series due April 1 2066 (Utilities)	24.50	0.41
BHK	Blackrock Core Bond Trust (Finance)	11.49	-0.18
BHV	BlackRock Virginia Municipal Bond Trust (Finance)	10.95	-0.11
ENX	Eaton Vance New York Municipal Bond Fund Common Shares of Beneficial Interest \$.01 par value (Finance)	9.50	-0.12
BBN	BlackRock Taxable Municipal Bond Trust Common Shares of Beneficial Interest (Finance)	16.59	-0.25
EAI	Entergy Arkansas LLC First Mortgage Bonds 4.875% Series Due September 1 2066 (Utilities)	22.39	-0.25
ISD	PGIM High Yield Bond Fund Inc. (Finance)	13.93	0.03
GBAB	Guggenheim Taxable Municipal Bond & Investment Grade Debt Trust Common Shares of Beneficial Intere...	16.08	-0.17
WFA	Western Asset Bond Fund Share of Beneficial Interest (Finance)	11.10	0.02

**010 News Cards**

Option to pin some news to keep them displayed regardless of new stories arrival in the same category.



**011 Market Making**

Use separate Bid and Ask formulas and include the option to disable them.

**Bid Orders**  ON  OFF

Formula

Quantity

Max Filled  OFF

Max Deviation  OFF

**Ask Orders**  ON  OFF

Formula

Quantity

Max Filled  OFF

Max Deviation  OFF

**012 Market Making**

Add the option to schedule when to run the strategy.

pend/Resume with Market  Scheduled

Sun Mon Tue Wed Thu Fri Sat

Turn  ON  OFF

From

To

Zone **Europe/Athens**

**013 Order Entry**

Rollover a position to a specific trading month.

Instrument	Fill Time	Position	Qty
ZMH25	10/10/2024		1
ESZ24			1
ZCK25			1

Offset	
Reverse	
Add to Position	
<b>Rollover</b>	ZMK25
Net Summary	ZMN25
Contingency	<b>ZMQ25</b>
	ZMU25
Instrument Details	ZMV25
Export to Excel	ZMZ25
Copy to Clipboard	ZMF26
Trades Summary	ZMH26
Trades Recap	ZMK26
Orders & Positions Monitor	ZMN26
	ZMQ26
	ZMU26

**014 Order Entry** New "Care" orders functionality.

In the "Orders & Positions Monitor" the "Care" order is displayed as a group and the "Execution" orders will be its members.

**015 What-If**

Choose to start the simulation from the Previous Settlements or the Current Market prices.

**016 What-If**

Add the possibility to alter the price with N deviations.

Instrument	Net Position	Price Original	Price Modified	Price Change %	Price Deviations
CBOT					
Agricultural					
ZC					
Futures					
ZCK25	↑ Long 1	434^2	473^2		+2

**017 What-If**

A plotter frame that displays the profit / loss and Greek values of an option vs the underlying price



This plotter can be launched during the simulation from the “What-If Price Changes” dialog for the position over an option contract.

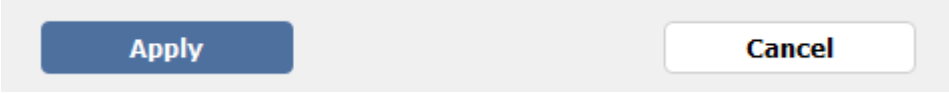


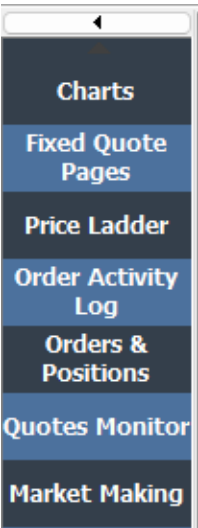

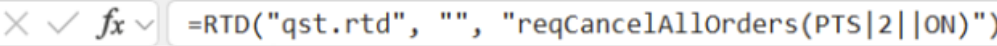
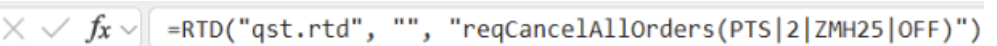
Also, it can be launched outside the simulation from the “Advanced Options” frame from the right click dropdown over a strike price.

1.0850	0.00860	0.00840	0.00870	~ 8.34
1.0900	0.01070	0.01070	0.01080	~ 8.10
1.0950				
1.1000				
1.1050				
1.1100				
1.1150				
1.1200				
1.1250				
1.1300				
1.1350				
1.1400				

Call 10900	Put 10900
Instrument Details	Instrument Details
Request Quote	Request Quote
Strategy Builder	Strategy Builder
Options Calculator	Options Calculator
What-If Charts	What-If Charts
Add Alarm	Add Alarm
Show Monetary Value	Show Monetary Value



## Improvements

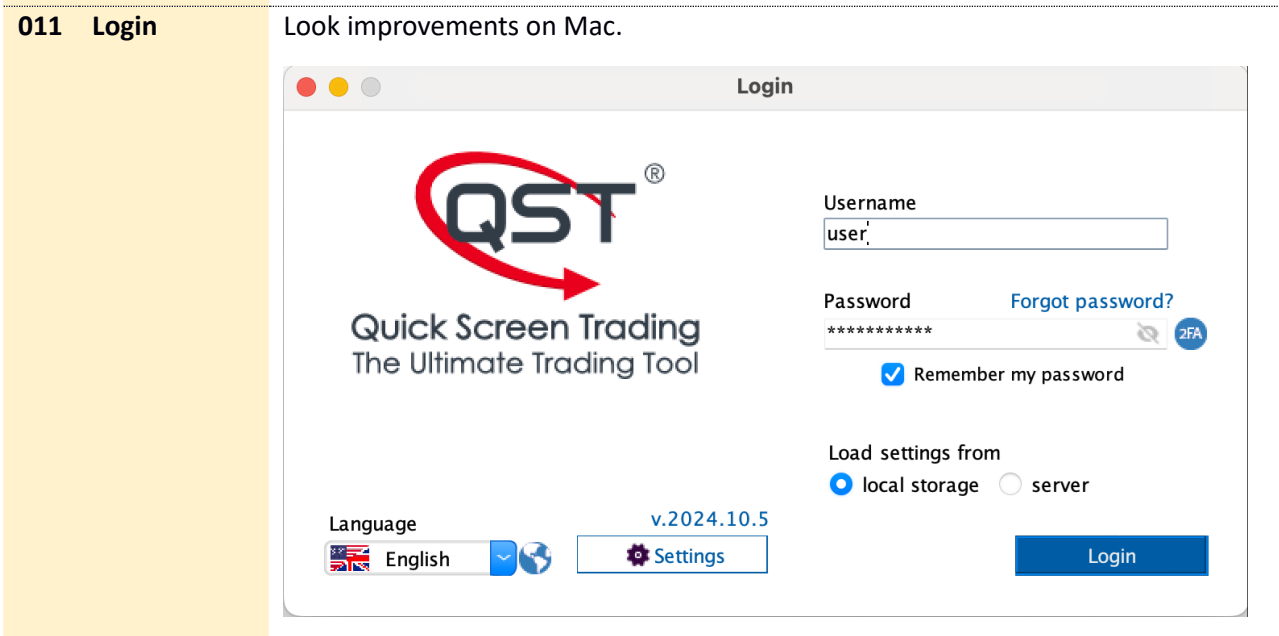
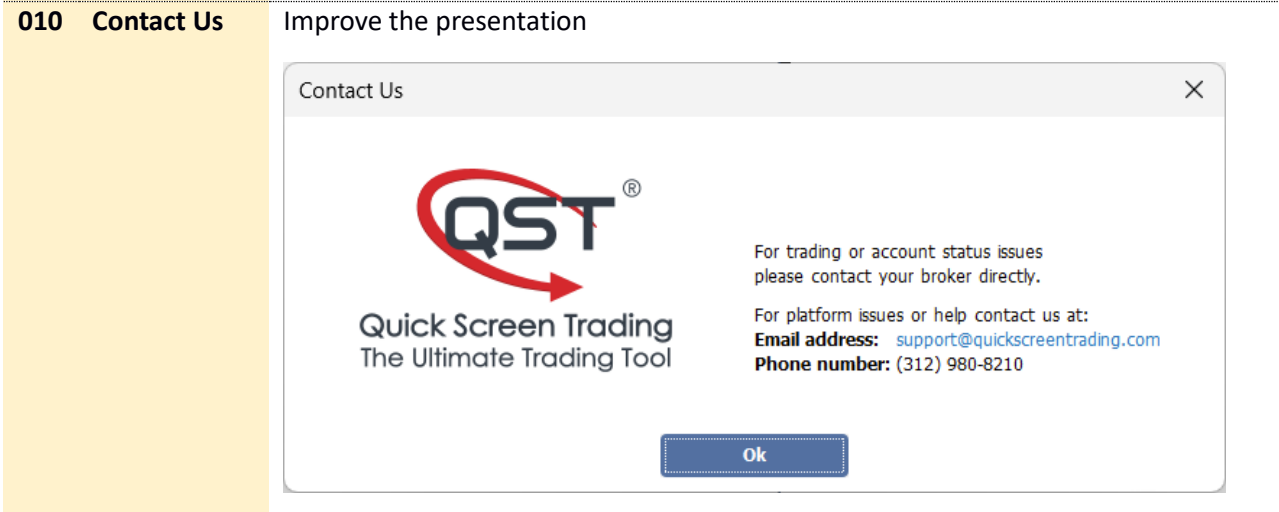
001 Look	<p>Improve the control buttons design in various dialogs.</p> 
002 Look	<p>Improve the look of the Buy / Sell buttons.</p> 
003 Look	<p>Use a "Live / Paper" switch in the Order Entry toolbar.</p> 
004 Look	<p>Improve the side bar when no icons are displayed.</p> 
005 Font	<p>Change the font used for displaying text in Chinese and Japanese languages</p> 
006 RTD	<p>Cancel all working orders for an account</p> 
007 RTD	<p>Cancel all working orders for a specified instrument, on a given account</p> 

**008 Wesockets** Request to cancel all working orders for an account  

```
{"RQT":"cancel_all_orders", "PV":"PTS", "AC":"886"}
```

**009 Prices** Emphasis on PIPs for FX instruments.

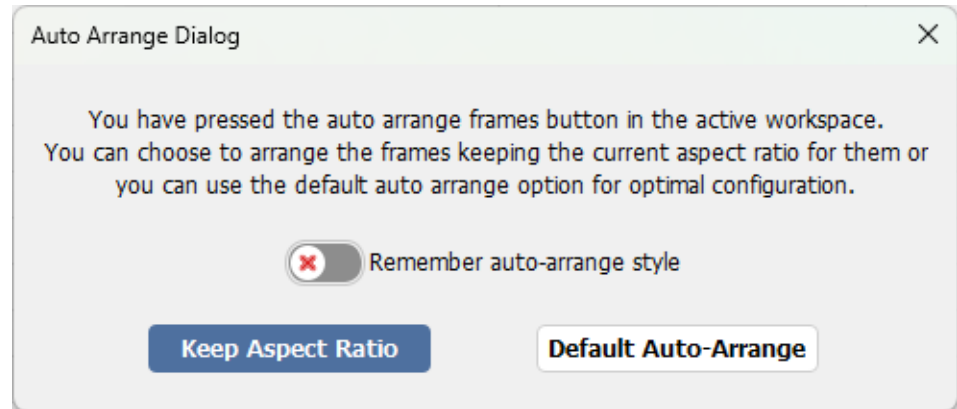
EUR/TRY Markets Direct	S	33.56 889	S	B
EUR/USD Markets Direct	S	1.08 203	S	B
EUR/ZAR Markets Direct	S	20.8 514	S	B



**012 Workspace**

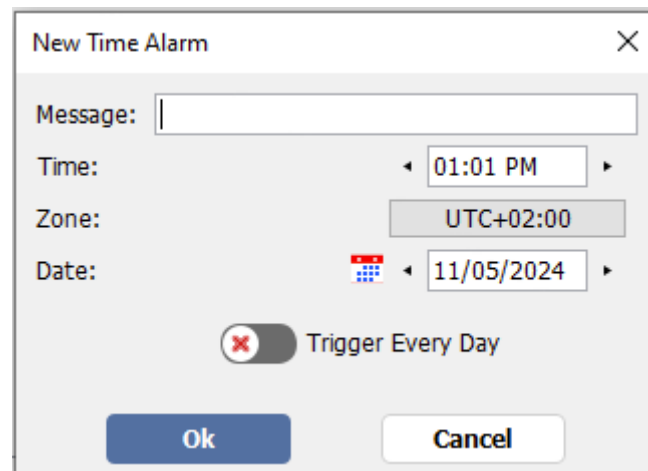
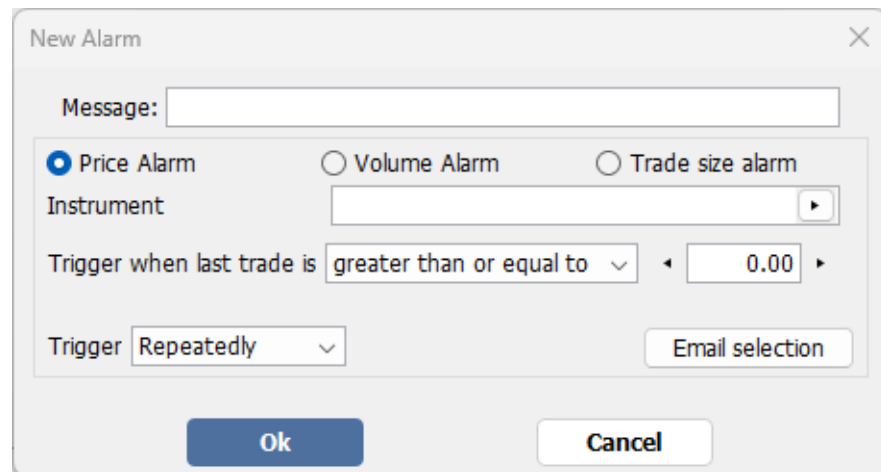
Responsive frame layouts by adapting transitions across varied screen resolution.

Include an option to retain the auto-arrange type when the number of frames in the workspace don't change.



**013 Alarms**

Separate the time alarms from the quote alarms



**014 Tables**

Display the size separated from the price in the same table cell.

Last	
418 2/8	2
995	1
95.930	19
110 15.5/32	6

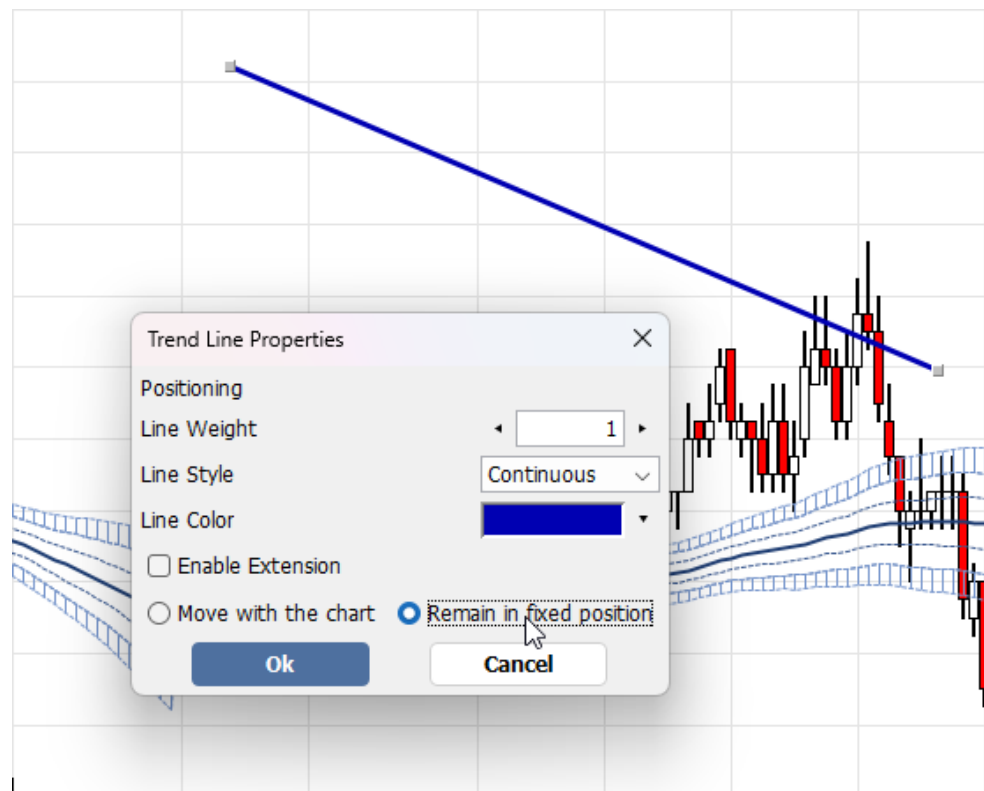
**015 Charts**

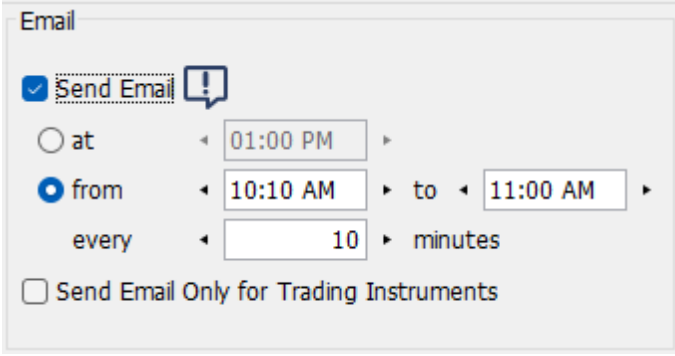
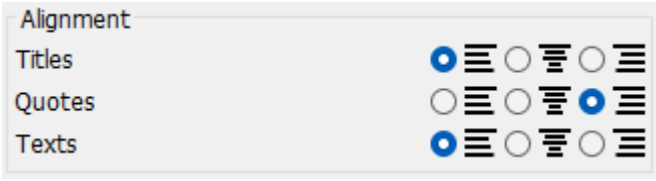
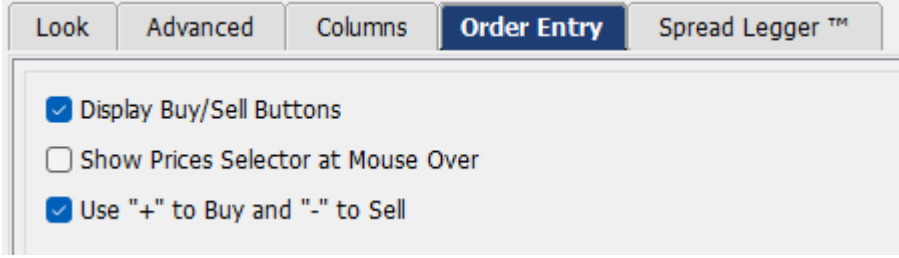

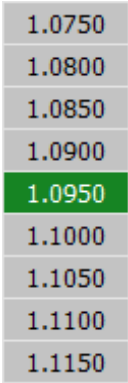
Optionally hide the indicator values on the side scale.



**016 Charts**

Optionally keep the primitives fixed on the frame and do not move them with the chart



<p><b>017 Quotes Monitor</b></p>	<p>Redesign the Send Email properties picker in the preferences dialog.</p> 
<p><b>018 Quotes Monitor</b></p>	<p>Add a new alignment for the text columns.</p> 
<p><b>019 Quotes Monitor</b></p>	<p>Trigger the Order Preview for the selected contract by pressing the + key for a Buy order or the – key for a Sell order.</p> 
<p><b>020 Advanced Options</b></p>	<p>Add a middle button for the recentering of strikes.</p> 
<p><b>021 Advanced Options</b></p>	<p>Optionally override the centered strike color.</p> 
<p><b>022 Options Chain</b></p>	<p>On Mac, fix the poor tabs contrast in the Properties dialog.</p>

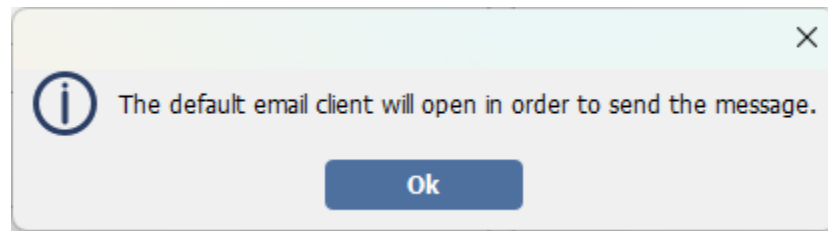
**023 Depth of Market**

Show only the top Bid / Ask in the Depth Of Market frame when the depth of market is disabled from provisioning.

Bid Size	Bid	Ask	Ask Size
	2770.0 (1)	2770.0 (1)	
	2769.9	2770.1	5
	2769.8	2770.2	
	2769.7	2770.3	
	2769.6	2770.4	
5	2769.5	2770.5	
	2769.4	2770.6	
	2769.3	2770.7	

**024 News and News Cards**

When the "Send Email" button is pressed, an intermediary dialog informs that the default email client will be launched.



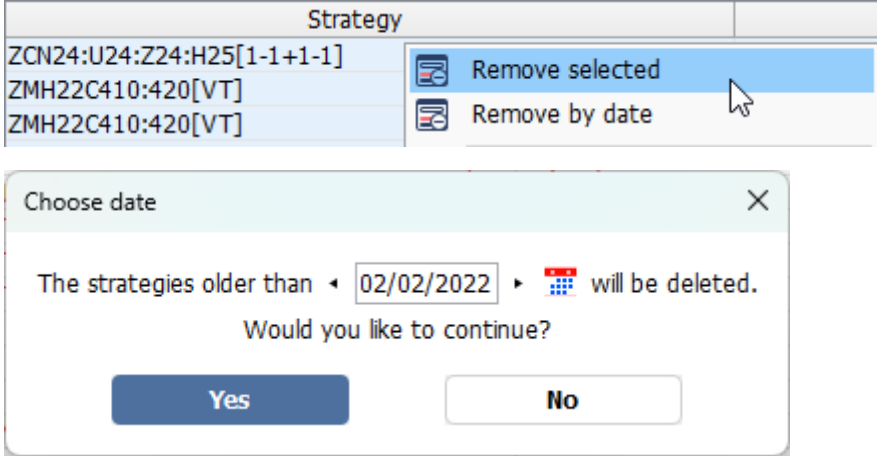
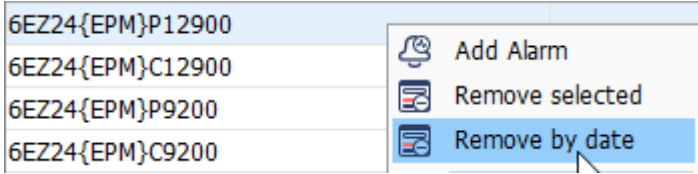
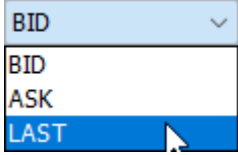
**025 E-px**

Replace GE with SOFR instruments, because GE was delisted from exchange.

SOFR Futures			
Instrument	Last	Change	Time
SR3U24	95.2300A	+0.25	08:39:56 AM
SR3Z24	95.6450A	+1.50	08:39:57 AM
SR3H25	95.9600A	+4.50	08:39:57 AM
SR3M25	96.1900A	+6.50	08:39:57 AM
SR3U25	96.3050A	+6.50	08:39:57 AM
SR3Z25	96.3550B	+5.50	08:39:57 AM
SR3H26	96.3900A	+6.50	08:39:57 AM
SR3M26	96.3950A	+7.00	08:39:57 AM
SR3U26	96.3800A	+7.00	08:39:57 AM
SR3Z26	96.3550B	+6.50	08:39:57 AM
SR3H27	96.3600A	+7.50	08:39:55 AM
SR3M27	96.3500B	+6.50	08:39:57 AM
SR3U27	96.3500B	+7.00	08:39:57 AM
SR3Z27	96.3400B	+7.50	08:39:57 AM
SR3H28	96.3300B	+7.50	08:39:57 AM
SR3M28	96.3150B	+7.50	08:39:57 AM
SR3U28	96.3000B	+7.50	08:39:55 AM
SR3Z28	96.2800B	+7.50	08:39:57 AM
SR3H29	96.2650A	+8.50	08:39:55 AM
SR3M29	96.2350B	+7.50	08:39:56 AM

Serial Months			
Instrument	Last	Change	Time
SR3Q24	94.9975B	-0.25	08:39:36 AM
SR3V24	95.3575B	+0.25	12:30:38 PM

<p><b>026 Strategies Builder</b></p>	<p>Remove the selected strategies or delete the ones older than a specified date.</p> 
<p><b>027 Show RFQ</b></p>	<p>Remove the selected RFQ from the “My RFQs” tab or delete the ones older than a specified date.</p> 
<p><b>028 Trading Summary</b></p>	<p>Restore the old currency upon loading the settings.</p>
<p><b>029 Market Making</b></p>	<p>Add an option to disable the price range verification.</p> <p>Max Deviation <input checked="" type="radio"/> OFF <input type="radio"/> 100</p>
<p><b>030 Market Making</b></p>	<p>Make the "Last" available in the underlying's prices list.</p> 
<p><b>031 Market Making</b></p>	<p>Add an option to disable the condition for stopping of strategy when the fills count reaches a maximum value.</p> <p>Max Filled <input checked="" type="radio"/> OFF <input type="radio"/> 100</p>
<p><b>032 Market Making</b></p>	<p>Optimize the strategies' reaction time to the underlying price changes.</p>
<p><b>033 Market Making</b></p>	<p>Place a new order immediately after a fill on one of the strategy orders, instead of waiting for a new tick from the underlying.</p>

**034 Account Information**

Change the layout so that the purchasing power fields are grouped.

QOR			
Initial Margin *	\$0.00	Maintenance Margin *	\$0.00
Initial Margin incl. Orders *	\$0.00	Maintenance Margin incl. Orders *	\$0.00
Potential Option Premium Purchase	\$0.00	Potential Equity Purchase	\$0.00
Start-of-Day Account Balance	\$123,954.55	Open Trade Equity	\$0.00
Intraday Commissions Applied	\$0.00	Equities Market Value	\$0.00
Intraday Fees Applied	\$0.00	Total Account Equity	\$123,954.55
Intraday Cash In/Out	\$0.00	Net Option Value	\$0.00
Gross Futures Profit/Loss	\$0.00	Securities On Deposit	\$0.00
Net Option Premium	\$0.00	Net Liquidation Value	\$123,954.55
Equities Purchase/Sale	\$0.00	Margin Credit	\$0.00
Current Account Balance	\$123,954.55	Estimated Purchasing Power	\$123,954.55
		Equities Purchasing Power	\$123,954.55

**035 Account Information**

Restore the old currency upon loading the settings.

**036 Account Summary**

Add a property to set the default currency and save it in the settings.

**037 Account Risk Monitor**

Change subject and body of the email.

Notify by  Email  Popup  Sound

Subject

Customize Email Body

What data to include in the email body?

Default Data  Custom Data

Available Selected

Account		
Account Name	»	
FM		
OC		
SC		
Init Marg	»	
Init Marg Incl Orders		
Maint Marg		
Maint Marg Incl Orders	«	
Long Opt Val		
Short Opt Val		
Net Opt Val		
Long Opt Premium	«	
Short Opt Premium		

Ok Cancel

**038 Account Risk Monitor**

Enable sounds for the alerts.



**039 Account Risk Monitor**

For alerts, optionally process only the values for the group and exclude from processing the values for the accounts that are member to a group.

Do not generate alerts for Accounts that are members of a Risk Group  
 Censor Account Name in email notification

**040 Contingencies**

Add the "Special Instructions" field to the "Spread Ledger" contingency.

Buy/Sell	Instrument	Account
Buy	ESZ24	
Sell	ESH25	

Iceberg (Incremental Quantity)  Synch Bid/Ask with Side

Special Instructions

Ok

**041 Order Activity Log**

Add a log entry with the "CanceledBy" information.

Order Status Changed - #149585: Sell 2 December 24 Euro FX @LMT @1.09180 Lifetime-GTC Status-Canceled By-aolar-tc16

**042 Order Entry**

Use "Shift + Del" to trigger the "Cancel All" dialog.

Cancel Orders

What orders do you want to cancel?

Account# 16057:

- #149586: Sell 3 ESZ24 @5768.50
- #149587: Buy 3 ESZ24 @5762.75

Ok Cancel

**043 Order Entry**

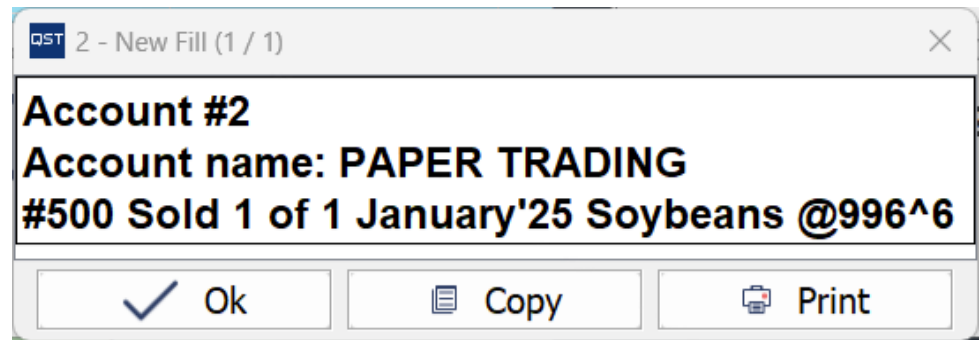
Allow the "Market" as default order type when clicking on the Bid/Ask prices.

Order Type by Action

	Ord Type
Click on Last	Limit
Click on Bid/Ask	Market

**044 Order Entry**

Add a "Copy" button to the fills popup.



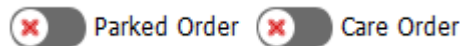
**045 Order Entry**

Handle multiple default connections specified at login.

This is for the users that have multiple QOR accounts. Each account will be for a different firm id. We can setup his account so as all these QOR connections are generated automatically at startup in case they are missing.

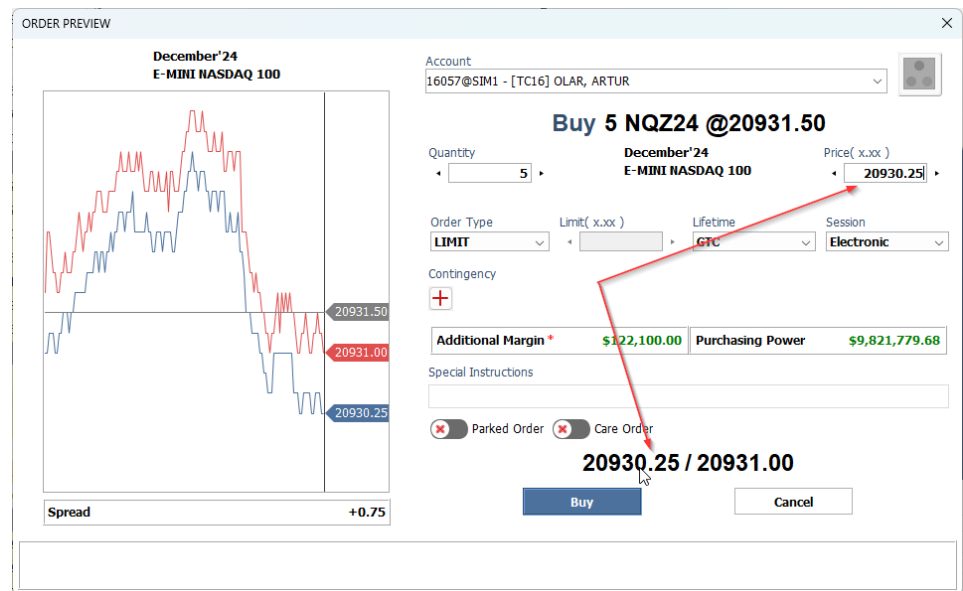
**046 Order Preview**

Replace 'care order' and 'parked order' checkboxes with switches.



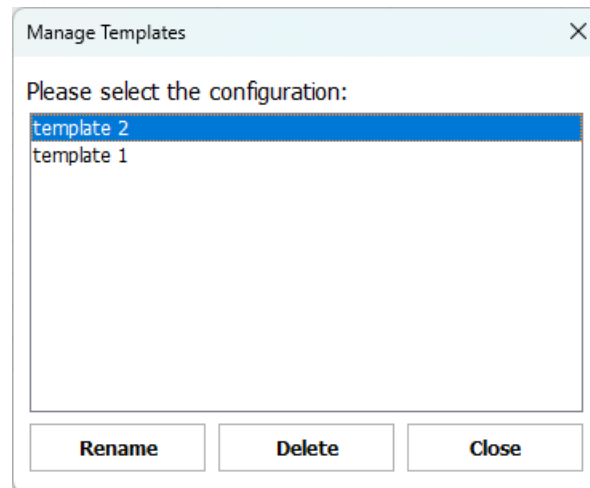
**047 Order Preview**

Update the price when clicking on the Bid / Ask.



048 What-If

Add "Delete" and "Rename" template features in the templates manager.



049 What-If

Bold the values set by the user in the Price and Volatility columns.

Instrument	Net Position	Price Original	Price Modified <input type="checkbox"/>	Price Change %	Price Deviations
⊕ ZC					
⊕ ZM					
⊖ CME					
⊖ Agricultural				<b>+7.00%</b>	
⊖ CB					
⊖ Futures					
CBF25	↓ Short 3	273.550	292.700	<b>+7.00%</b>	
CBG25	↓ Short 3	276.450	270.925	<b>-2.00%</b>	
CBH25	↓ Short 3	278.550	298.050	<b>+7.00%</b>	
CBJ25	↓ Short 3	281.025	289.450	<b>+3.00%</b>	
CBK25	↓ Short 3	284.000	303.875	<b>+7.00%</b>	
CBM25	↓ Short 3	285.000			
⊖ Currencies					

050 What-If

Recompute the options' price when the user changes the underlying price.

Simulation

**What If Price Changes?** Stop PS started Stop LS started

Instrument	Net Position	Vol. Original	Vol. Modified	Vol. Change %	Price Original	Price Modified <input type="checkbox"/>	Price Change %	Price Deviations
CBH25	↓ Short 3				278.550	278.550		
CBJ25	↓ Short 3				281.025	281.025		
CBK25	↓ Short 3				284.000	284.000		
CBM25	↓ Short 3				285.000	285.000		
⊖ Currencies								
⊖ 6E								
⊖ Futures								
6EZ24					1.09070	1.14525	<b>+5.00%</b>	
⊖ Options								
6EZ24(EPM)P10900	↓ Short 3	8.59			0.01050	0.00028		

051 What-If

Add the option to compute the volatilities from Last, Settlement, Bid/Ask price.

For volatility use:

settlements

last prices

bids / asks

**052 What-If**

Show a tooltip with computation details for the "Vol. Original" and "Price Modified" values of the options.

Value	Tooltip Details
8.88	<b>6EZ24{EPM}P10900</b> Volatility <b>8.88</b> Underlying Price <b>1.09190</b> Options Price <b>0.01030</b> Days to Expiration <b>31</b> Rate of Interest <b>+4.86%</b>
0.00311	<b>6EZ24{EPM}P10900</b> Fair Value <b>0.00311</b> Underlying Price <b>1.11435</b> Volatility <b>8.88</b> Days to Expiration <b>31</b> Rate of Interest <b>+4.86%</b>

**Bug Fixes and Optimizations**

We've fixed many bugs and made a lot of optimizations.